



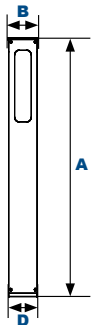
LIGHTING & ELECTRICAL PRODUCTS GROUP

B81Q

L70
25°C

187,000 Hours

AmberLED Contemporary Bollard



Dimensions

Diameter 1 (B)	5" (128mm)
Diameter 2 (D)	4 3/4" (120mm)
Height (A)	43 3/4" (1100mm)

Amber Technology

The LEPG B81Q AmberLED Contemporary Bollard with SoftLED LumaLens opal UV-Stabilized polycarbonate lens and sealed optical compartments are designed to replace outdated Halogen and Compact Fluorescent lighting systems for wildlife, dark skies, or security applications requiring monochromatic AMBER light. LEDs operate between 585 and 595nm, greater than 560nm required for wildlife protection. These fixtures are ideal for retail centers, industrial parks, schools and universities, public transit and airports, office buildings and medical facilities.

Specifications and Features:

Housing:

Extruded Aluminum Housing with Flush Mounting Base & Vandal-Resistant Screws, Internal Driver Tray for Easy Maintenance.

Listing & Ratings:

ETL: Listed for Wet Locations, ANSI/UL 1598, 8750
IP65 Sealed LED Compartment.

Finish:

Textured Architectural Bronze or Black Powdercoat Finish Over a Chromate Conversion Coating. Custom Colors Available Upon Request.

Lens:

SoftLED LumaLens Opal UV-Stabilized Polycarbonate Vandal-Resistant Lens.

Mounting Options:

Mounting Kit with 8" Zinc-Plated Anchor Bolts, Included.

AmberLED:

Aluminum Boards

Wattage:

Array: 18w, System: 19.6w

Driver:

Electronic Driver, 120-277V, 50/60Hz; Less Than 20% THD and PF>0.90. Standard Internal Surge Protection 2kV. 0-10V Dimming Standard for a Dimming Range of 100% to 10%; Dimming Source Current is 150 Microamps.

Warranty:

5-Year Warranty for -20°C to +40°C Environment.

See Page 3 for Projected Lumen Maintenance Table.

Project Information:

Project Name: _____ Fixture Type: _____

Complete Catalog #: _____ Date: _____

Comments: _____

Certification & Listings:



Specifications subject to change without notice. Rev. 021624

12802 Commodity Place • Tampa, FL 33626 • Phone: (813) 316-2221
For more information visit our website at www.qssi.com



Order Information Example:

B81QF1X18UAMLBSF

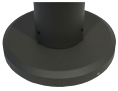
B81Q	F	1X18	U	AM	L		
Model	Optic	Wattage	Driver	CCT	Lens	Color	Options
B81Q=AmberLED Contemporary Bollard	F=Wide Beam Spread	1X18=18w	U=120-277V	AM=1400K	L=SoftLED LumaLens Opal UV-Stabilized Polycarbonate Vandal-Resistant Lens	B=Black C=Custom (Consult Factory)	SF=Single Fuse SP=Surge Protection

Accessories & Replacement Parts:

**Mounting Accessories
(Order Separately, Field Installed)**

BREBASE* Bollard Retrofit Base Kit Adapts New Bollards to Most Existing Bolt Patterns. Fits all LEPC Bollards, Die Cast with Powdercoat Finish, Hardware Included. 1 1/2" Dia. x 1 1/2" H

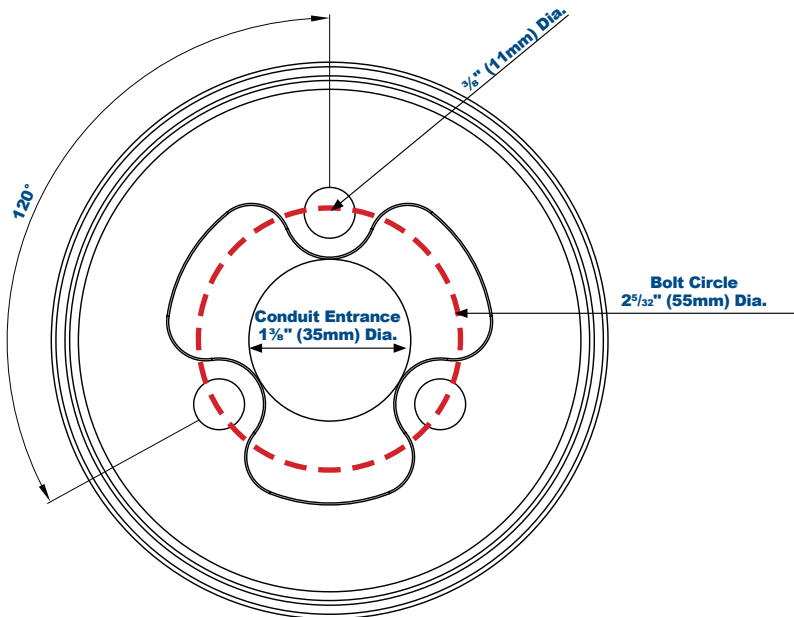
*Specify Color: Z=Bronze, B=Black, C=Custom (Consult Factory)



BREBASE*

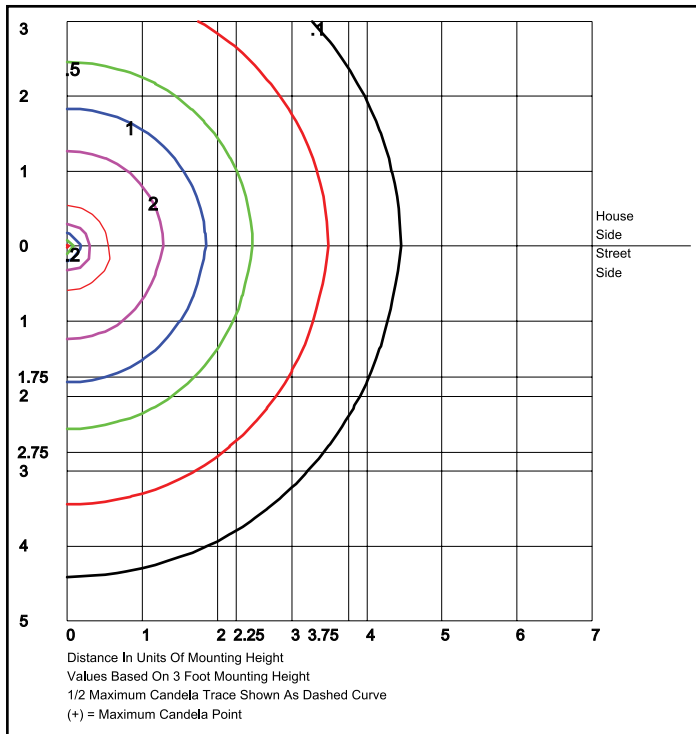
*Shown Mounted

Base Dimensions



Specifications subject to change without notice. Rev. 121222

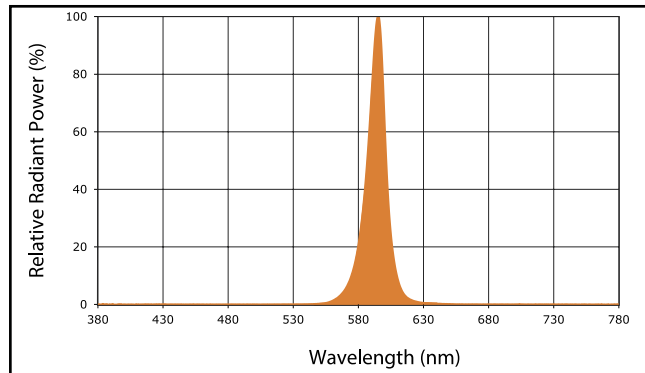
Photometric Data



B81QF1X18UAML

Type V, LumaLens
Grid in feet, Mounting Height = 3 ft.

Spectral Chart



Photometric Performance

	Wattage (Catalog Logic)	18W (1X16)
	Input Watts	19.6W
Optic	CCT	Delivered Lumens
B81 with LumaLens	Amber	919
	BUG Rating	B1-U4-G2

Projected Lumen Maintenance

Data shown for Amber LEDs			Compare to MH			
TM-21-11	Input Watts	Initial	25,000 Hrs	50,000 Hrs	100,000 Hrs	Calculated LED Life
L70 Lumen Maintenance @ 25°C / 77°F	19.6w	1.00	0.96	0.92	0.84	187,000
L70 Lumen Maintenance @ 50°C / 122°F		1.00	0.94	0.89	0.78	136,000
L80 Lumen Maintenance @ 40°C / 104°F		1.00	0.95	0.91	0.81	106,000

NOTES:

1. Projected per IESNA TM-21-11. Data references the extrapolated performance projections for the base model in a 25°C ambient, based on 10,000 hours of LED testing per IESNA LM-80-08.
2. Compare to MH box indicates suggested Light Loss Factor (LLF) to be used when comparing to Metal Halide (MH) systems.