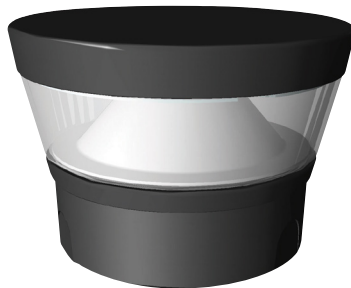


EasyLED Round & Square Pillar Tops

L70
25°C **187,000 Hours**



B1BPTQ
Round Dome Pillar Top



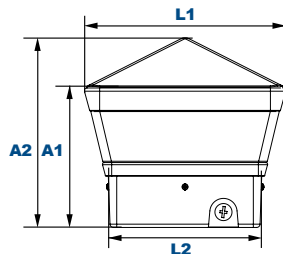
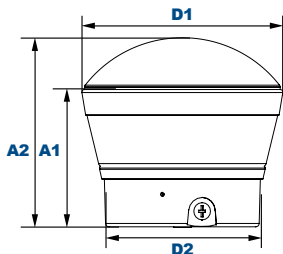
B1PTQ
Round Flat Pillar Top



B2CPTQ
Square Pyramid Pillar Top



B2PTQ
Square Flat Pillar Top



Dimensions

Diameter (D1)	9 1/8" (233mm)
Diameter (D2)	7" (178mm)
Height (A1)	6 1/4" (159mm)
Height (A2)	8 3/4" (219mm)

Dimensions

Length² (L1)	9 1/4" (236mm)
Length² (L2)	7" (178mm)
Height (A1)	6 3/8" (162mm)
Height (A2)	8 3/4" (222mm)

The LEPG EasyLED Pillar Top luminaires with UV-stabilized polycarbonate lenses and sealed optical compartments are designed to replace HID lighting systems up to 70w MH or HPS. These fixtures are designed for use on pillars, columns, fences, railings and other outdoor structures. Ideal for use in retail centers, schools and universities, office buildings, apartments and condominium complexes, and residential areas.

Specifications and Features:

Housing:

Die Cast Aluminum Housing with Flush Mounting Base, Flat, Dome and Pyramid Top, Internal Driver Tray for Easy Maintenance. 1/2" Coin Plugs for Conduit Entry.

Listing & Ratings:

ETL: Listed for Wet Locations, ANSI/UL 1598, 8750
IP66 Sealed LED Compartment.

Finish:

Textured Architectural Bronze or Black Powdercoat Finish Over a Chromate Conversion Coating. Custom Colors Available Upon Request.

Reflector:

Reflective White UV-Stabilized Polycarbonate Cone Reflector

Lens:

Clear UV-Stabilized Polycarbonate or SoftLED LumaLens Opal UV-Stabilized Polycarbonate Vandal-Resistant Lens.

Mounting:

Flush Mount on Flat Surfaces. Cast-In Electrical Box Template with 1/2" Coin Plug on Bottom.

EasyLED LED:

Aluminum Boards

Wattage:

Array: 16w, System: 17.7w (up to 70w HID equivalent)
Array: 23w, System: 24.8w (up to 70w HID equivalent)
Array: 34w, System: 37.2w (up to 70w HID equivalent)

Driver:

Electronic Driver, 120-277V, 50/60Hz or 347V, 50/60Hz; Less Than 20% THD and PF>0.90. Standard Internal Surge Protection 2kV. 0-10V Dimming Standard for a Dimming Range of 100% to 10%; Dimming Source Current is 150 Microamps.

Warranty:

5-Year Warranty for -20°C to +40°C Environment.

See Page 3 for Projected Lumen Maintenance Table.

Project Information:

Project Name: _____ Fixture Type: _____

Complete Catalog #: _____ Date: _____

Comments: _____

Certification & Listings:



SoftLED

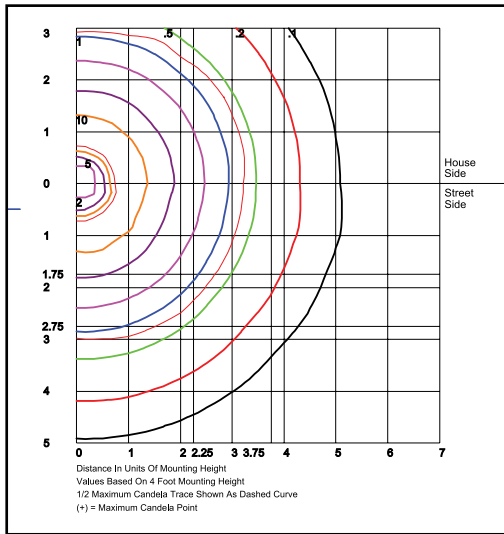
Order Information Example:

B1PTQF1X34U4KCZSF

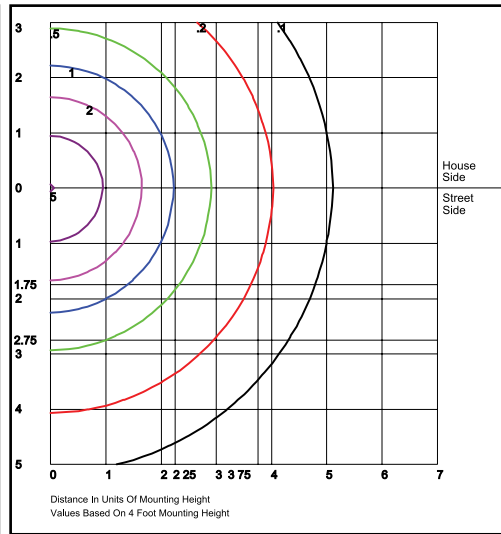
F

Model	Optics	Wattage	Driver	CCT	Lens	Color	Options
B1PTQ =Round Flat Pillar Top B1BPTQ =Round Dome Pillar Top B2PTQ =Square Flat Pillar Top B2CPTQ =Square Pyramid Pillar Top	F =Wide Beam Spread	1X16 =16w 1X23 =23w 1X34 =34w	U =120-277V C =347V* H =347-480V* *23w Model Only *34w Model Only	3K =3000K 4K =4000K	C =Clear UV-Stabilized Polycarbonate Vandal-Resistant Lens L =SoftLED LumaLens Opal UV-Stabilized Polycarbonate Vandal-Resistant Lens	Z =Bronze B =Black C =Custom (Consult Factory)	SF =Single Fuse* DF =Double Fuse* SP =Surge Protection *120-277V Models Only.

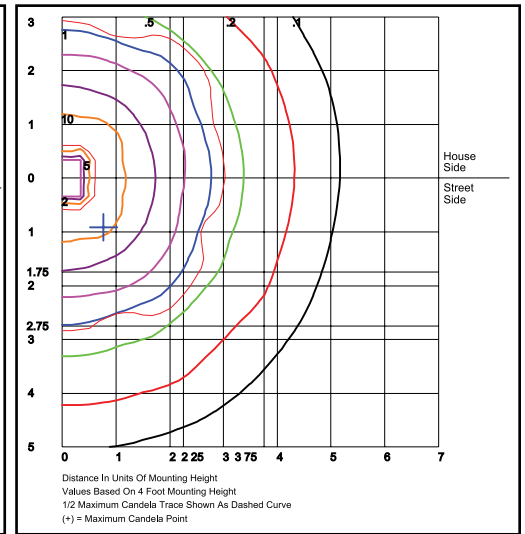
Photometric Data



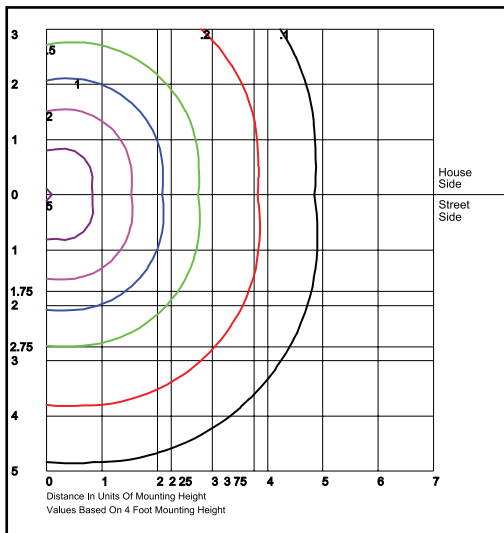
B1PTQF1X34U4KC & B1BPTQF1X34U4KC
Type V, Clear Lens
Grid in feet, Mounting Height = 4 ft.



B1PTQF1X34U4KL & B1BPTQF1X34U4KL
Type V, LumaLens
Grid in feet, Mounting Height = 4 ft.



B2PTQF1X34U4KC & B2CPTQF1X34U4KC
Type V, Clear Lens
Grid in feet, Mounting Height = 4 ft.



B2PTQF1X34U4KL & B2CPTQF1X34U4KL
Type V, LumaLens
Grid in feet, Mounting Height = 4 ft.

Photometric Performance

Optic	CCT	Delivered Lumens		
		16W (1X16)	23W (1X23)	34W (1X34)
Wattage (Catalog Logic)		16W	23W	34W
Input Watts		17.7W	24.8W	37.2W
B1PT Clear Polycarbonate F=Type V Optic	3000K	1,406	1,968	2,952
	4000K	1,525	2,135	3,202
	5000K	-	-	-
	BUG Rating	B1-U3-G1	B1-U3-G1	B1-U3-G1
B1PT LumaLens F=Type V Optic	3000K	899	1,258	1,888
	4000K	975	1,365	2,047
	5000K	-	-	-
	BUG Rating	B1-U3-G1	B1-U3-G1	B1-U4-G2

Optic	CCT	Delivered Lumens		
		16W (1X16)	23W (1X23)	34W (1X34)
Wattage (Catalog Logic)		16W	23W	34W
Input Watts		17.7W	24.8W	37.2W
B2PT Clear Polycarbonate F=Type V Optic	3000K	1,432	2,005	3,008
	4000K	1,554	2,175	3,263
	5000K	-	-	-
	BUG Rating	B1-U3-G1	B1-U3-G1	B1-U4-G1
B2PT LumaLens F=Type V Optic	3000K	864	1,210	1,816
	4000K	938	1,313	1,969
	5000K	-	-	-
	BUG Rating	B0-U3-G1	B1-U3-G1	B1-U4-G2

Projected Lumen Maintenance

Data shown for 4000 CCT TM-21-11	Input Watts	Compare to MH				Calculated L70@ 25°C
		Initial	25,000 Hrs	50,000 Hrs	100,000 Hrs	
B1PT/B2PT L70 Lumen Maintenance @ 25°C / 77°F	All wattages up to and including 37w	1.00	0.96	0.92	0.84	187,000
B1PT/B2PT L70 Lumen Maintenance @ 50°C / 122°F		1.00	0.93	0.87	0.73	113,000
B1PT/B2PT L80 Lumen Maintenance @ 40°C / 104°F		1.00	0.97	0.93	0.86	144,000

NOTES:

1. Projected per IESNA TM-21-11. Data references the extrapolated performance projections for the base model in a 25°C ambient, based on 10,000 hours of LED testing per IESNA LM-80-08.
2. Compare to MH box indicates suggested Light Loss Factor (LLF) to be used when comparing to Metal Halide (MH) systems.