

AmberLED Aeroform Round & Square Bollards

L70
25°C **187,000 Hours**



AFRB20Q

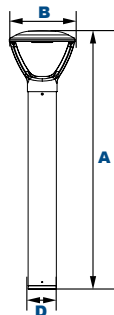
AFSB20Q



Shown with GFCI

Dimensions

Width (B)	11" (280mm)
Diameter (D)	4 3/4" (120mm)
Height (A)	42" (1,067mm)



The LEPG AFRB20Q & AFSB20Q AmberLED Aeroform Bollards with UV-stabilized polycarbonate lenses and sealed optical compartments are designed to replace HID lighting systems for wildlife, dark skies, or security applications requiring monochromatic AMBER light. LEDs operate between 585 and 595nm, greater than 560nm required for wildlife protection. These fixtures are ideal for retail centers, industrial parks, schools and universities, public transit and airports, office buildings and medical facilities.

Specifications and Features:

Housing:

Extruded Aluminum Housing with Flush Mounting Base, Sand Cast Twin Arm Head, Sealed Driver Compartment.

Listing & Ratings:

ETL: Listed for Wet Locations, ANSI/UL 1598, 8750
IP66 Sealed LED Compartment.

Finish:

Textured Architectural Bronze or Black Powdercoat Finish Over a Chromate Conversion Coating. Custom Colors Available Upon Request.

Lens:

SoftLED LumaLens Opal UV-Stabilized Polycarbonate Vandal-Resistant Inner Lens to Seal LED Array.

Mounting Options:

Mounting Kit with 8" Anchor Bolts, Included.

AmberLED:

Aluminum Boards

Wattage:

17w: Array: 16.5w, System: 18.7w

Driver:

Electronic Driver, 120-277V, 50/60Hz; Less Than 20% THD and PF>0.90. Standard Internal Surge Protection 2kV. 0-10V Dimming Standard for a Dimming Range of 100% to 10%; Dimming Source Current is 150 Microamps.

Controls:

Fixtures Ordered with Factory-Installed Motion Sensor Controls are Internally Wired for Switching and/or 1-10V Dimming Within the Housing. Remote Direct Wired Interface of 1-10V Dimming is Not Implied and May Not Be Available, Please Consult Factory. Fixtures are Tested with QSSI Controls and May Not Function Properly With Controls Supplied By Others. Fixtures are NOT Designed for Use with Line Voltage Dimmers.

Warranty:

5-Year Warranty for -40°C to +50°C Environment.

See Page 3 for Projected Lumen Maintenance Table.

Project Information:

Project Name: _____ Fixture Type: _____

Complete Catalog #: _____ Date: _____

Comments: _____

Certification & Listings:



Specifications subject to change without notice. Rev. 021624

Order Information Example: AFRB20QF1X17UAMLBGF1

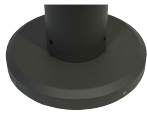
	F	1X17	U	AM	L			
Model	Optics	Wattage	Driver	CCT	Lens	Color	Height	Options
AFRB20Q=AmberLED Aeroform Round Bollard AFSB20Q=AmberLED Aeroform Square Bollard	F=Wide Beam Spread	1X17=17w	U=120-277V	AM=1400K	L=SoftLED LumaLens Opal UV-Stabilized Polycarbonate Array Lens	Z=Bronze B=Black C=Custom (Consult Factory)	(Leave Blank)= 42" Standard Height 36=36" Height 30=30" Height	GF1=GFCI Outlet, 15A, 120V S5=Internal Microwave Sensor* *120-277V Models Only.

Accessories & Replacement Parts:

**Mounting Accessories
(Order Separately, Field Installed)**

BREBASE* Bollard Retrofit Base Kit Adapts New Bollards to Most Existing Bolt Patterns. Fits all LEPG Bollards. Die Cast with Powdercoat Finish, Hardware Included. 1 1/2" Dia. x 1 1/2" H

*Specify Color: Z=Bronze, B=Black, C=Custom (Consult Factory)



BREBASE*

*Shown Mounted

**Accessories
(Order Separately, Field Installed)**

P17126 Remote Programming Tool for P17125



P17126

**Replacement Parts
(Order Separately, Field Installed)**

P17125 Internal Microwave Sensor (120-277V Only)

BOADP1 Adapter Plate with Gaskets for Outlet Boxes. Fits LEPG Round Bollards. Die Cast with Bronze Powdercoat Finish.

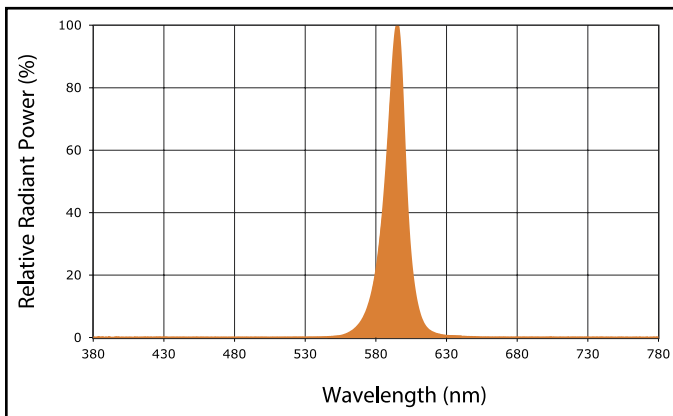


P17125



BOADP1

Spectral Chart



Photometric Performance

LED Board Watts	Input Watts	Optics	Amber LED				
			Lumens	LPW	B	U	G
AmberLED 17w	18.7w	Wide Beam Spread	951	51	0	0	0

Projected Lumen Maintenance

Data shown for Amber LEDs TM-21-11	Input Watts	Compare to MH				Calculated LED Life
		Initial	25,000 Hrs	50,000 Hrs	100,000 Hrs	
AFRB20 L70 Lumen Maintenance @ 25°C / 77°F	18.7w	1.00	0.96	0.92	0.84	187,000
AFRB20 L70 Lumen Maintenance @ 50°C / 122°F		1.00	0.93	0.87	0.73	113,000
AFRB20 L80 Lumen Maintenance @ 40°C / 104°F		1.00	0.97	0.93	0.86	144,000

NOTES:

1. Projected per IESNA TM-21-11. Data references the extrapolated performance projections for the base model in a 25°C ambient, based on 10,000 hours of LED testing per IESNA LM-80-08.
2. Compare to MH box indicates suggested Light Loss Factor (LLF) to be used when comparing to Metal Halide (MH) systems.